



Fact Sheet

63 Bangkok Boutique Bed and Breakfast
Ekamai , Sukhumvit

Overview

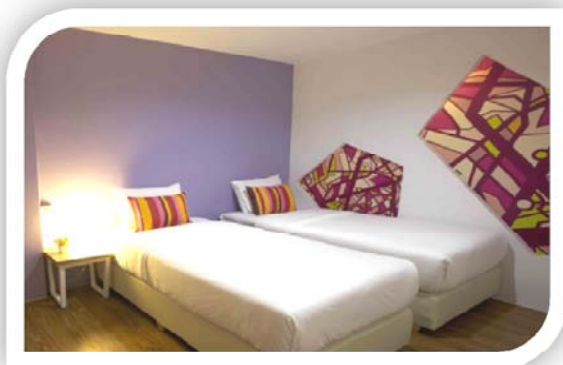
63 Bangkok boutique Bed & Breakfast is designed with young travelers at mind. Each of our 42 chic Rooms offers considerate design with the intelligent comforts. This trendy Lifestyle 63 Bangkok provides high-speed internet all over the residence. Every moment you are with us, you are guaranteed to always be connected with your world. Our co-working space will surely not disappoint!



Location

Conveniently located on Sukhumvit Road towards the beginning of Soi 63, in the heart of Bangkok's trendy area of Ekkamai, you will find three easy accesses.

- Three steps to Ekkamai BTS Skytrain Station, step outside and you are right in front of escalator to the sky train station providing easy access to major shopping malls and local attractions.
 - Three minutes walking distance to Gateway Ekkamai, the new shopping mall with shops and services. There is a variety of Japanese restaurants, choices of international cuisines, supermarket, lifestyle fashion outlets, beauty and health shops, IT store and edutainment center.
 - Three minutes away from Eastern Bus Terminal, just cross the road, this transportation hub to all east of Thailand' cities, travelers have easy access to major tourist spots such as Pattaya, Rayong and Trad.



ACCOMMODATIONS OVERVIEW

A truly chic boutique bed & breakfast, the 63 Bangkok offers 42 exquisite guest rooms, each averaging up to 22 square-meters, was designed for discerning travelers; each room features modern amenities and a contemporary design. Your happiness is our desire, our warmth comes from the heart – and our passion to ensure your time with us is unforgettable.

Wrap yourself in sensory delights in the stylish spaces of 63 Bangkok boutique Bed & Breakfast , where guest rooms offer a sensational swirl of high-energy interiors, vivid design, room amenities such as air conditioning, free Wi-Fi connection plus all highly standard bathroom amenities.

Bedrooms are available in Small, Medium and Big sizes.

63 (S) Room

“S” ROOM

Love things simple and a little bit hip so you will love this little room. But best of all is all the stuff it cleverly fits in. **“S” ROOMS** are our cozy room type while providing the best value. **“S”** rooms measure approximately 14sqm, feature one full size bed with functional layout. An eye for design goes hand in hand with a light, bright and modern effect. A good night's sleep is certain on the pillow-top mattress. It's the perfect place to relax and prepare for your next adventure. The bathrooms have a standalone shower. Please note standard rooms cannot accommodate an extra bed. Room Size: 14 sqm.

Bed Type: Single 3.5 ft.

Room Features :

- Free wireless internet access
- Desk
- Hot and Cold Shower
- Bath room amenities
- Free drinking water 1 bottles a day



63 (MB) Room

"MB" ROOM (M-Budget) These guestrooms offer a tremendous value as they are priced only slightly higher than "S" rooms. The room is perfect for guests who is seeking for good accommodation and spend most of their time exploring Bangkok or short stay. Our 18 sqm. Superior rooms offer exceptional comfort and tranquility to every guest.

Displaying an attractive contemporary design with tasteful furnishings, our spacious superior can be set-up as either a large king-size bed or with two separate beds and has a user-friendly bathroom with a separated shower. Each room comes complete with extra amenities and careful attention given to the little touches, each room exudes that home away from home comfort.

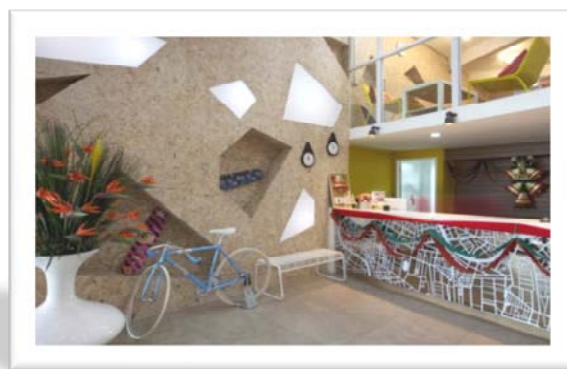
Room Size : 18 sqm.

Bed Type : 2 Twins or 1 King

Remark: Accommodate maximum 2 persons per room.

Room Features :

- Free wireless internet access
- Desk
- Hot and Cold Shower
- Bath room amenities
- Free drinking water 2 bottles a day



63 (MS) Room

"MS" ROOM (M-Standard) The same size as our 'MB' rooms (18 sqm), but with the additional amenities. These guestrooms offer a tremendous value as they are priced only slightly higher than "MD" rooms. "MS" Room is popular among our guests from worldwide.

Displaying an attractive contemporary design with tasteful furnishings, our spacious superior can be set-up as either a large king-size bed or with two separate beds and has a user-friendly bathroom with a separated shower. Each room comes complete with extra amenities and careful attention given to the little touches, each room exudes that home away from home comfort.

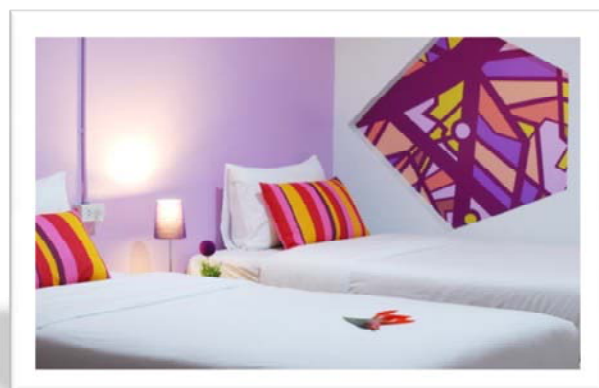
Room Size : 18 sqm.

Bed Type : 2 Twins or 1 King

Remark: Accommodate maximum 2 persons per room.

Room Features :

- Television
- Refrigerator
- Free wireless internet access
- Desk
- Hot and Cold Shower
- Bath room amenities
- Free drinking water 2 bottles a day



63 (L-T) Room

Three **or Four** Is Never a Crowd: Share and Save

"L-T" Room 63 Bangkok Boutique Residence's comfortable and inexpensive Superior triple rooms offer all the space you could need at a reasonable price, particularly designed to host a small family or a group of friends traveling together. These big rooms measure approximately 23 sqm. Rooms are furnished with 3 twin beds in the size of 3.5 ft. so can be shared with up to 3 persons in room. Superior Rooms are well-appointed and offer excellent rates. Spacious, comfortable, functional rooms complete with the following services :

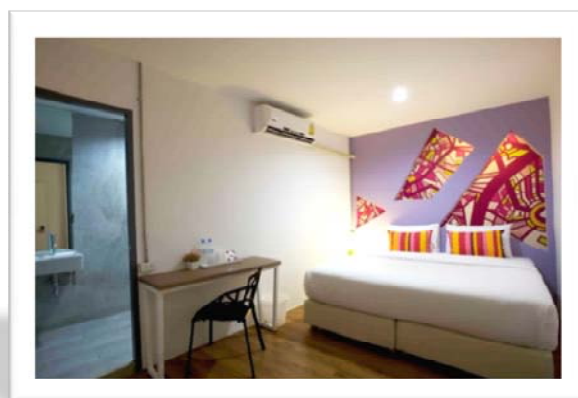
Room Size: 23 sqm.

Bed Type: 3 twin beds in the size of 3.5 ft.

Remark: Accommodate maximum 3 persons per room.

Room Features :

- Free wireless internet access
- Desk
- Hot and Cold Shower
- Bath room amenities
- Free drinking water 3 bottles a day



Check-in & Check-Out Check-in Time : 14.00 pm
Check-out Time: 12.00 noon

Facilities & Services

Reception
63 Café & Library
House keeper services.
Free Access Wifi.
Safety Deposit Box
CCTV , Early Arrival and late departure rest area (Limited space)

Distance From/To:

Suvarnabhumi Airport by Car	45 Minutes
Eastern Bus Station by Walk	3 Minutes
Terminal 21 by BTS	5 Minutes
Siam Center by BTS	10 Minutes

How to get there

By Sky Train (BTS)

Sky Train (BTS): Take a BTS Sukhumvit Line to The Ekamai station (E7)

By Bus

- **Sukhumvit Rd.** Bus No. 2, 25, 38, 40, 98, 508, 511, 513, 551, 552
- **Rama IV Rd.**
Bus No. 22, 45, 46, 109, 115, 116, 149, 154, 507, 519, 544, 173
- **Sukhumvit 42 Rd.**
Bus No. 71, 72, 98, 149


By



63 BANGKOK

Boutique Bed & Breakfast
1323/2 Sukhumvit Road
Khwaeng Phra Kanong Nua
Khet Watthana , Bangkok 10110
(Next to BTS Station,
Opposite Gateway Ekkamai)

www.63Bangkok.com
Tel. 02-392 5961-3
094-493 3518
Fax. 02-392 5965



63 BANGKOK

Boutique Bed & Breakfast
1323/2 Sukhumvit Road
Khwaeng Phra Kanong Nua
Khet Watthana , Bangkok 10110
(Next to BTS Station,
Opposite Gateway Ekkamai)

www.63Bangkok.com
Tel. 02-392 5961-3
094-493 3518
Fax. 02-392 5965

Car

Route 1: New Petchburi Road

From New Petchburi Road, turn right at Soi Sukhumvit 63 (Ekamai) and turn left at Sukhumvit Road. 63 Bangkok is on your left between Banrai Coffee and Wat Tad Thong

Route 2 : Asoke Montri Intersection

Route 3: Rama IV

Route 4: Art-Narong Expressway

Route 5: Sukhumvit 40

Route 6: Klongton Intersection